

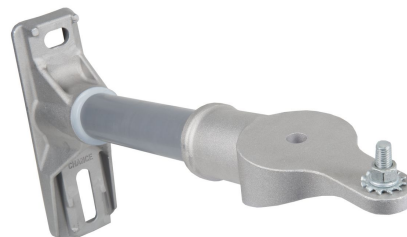


15° Tear Drop Cutout / Arrester Standoff Bracket w/ Hardware, 18 in

By Chance

Catalog # [1SBM18TDB](#)

18" Medium Duty Fiberglass 15° 1-Position Single Phase Tear Drop Cutout / Arrester Bracket (With Hardware)



Features

- Single position tear drop end fitting with hardware (bolt, nut, and washers)
- 1.5" (medium duty) fiberglass rod
- 15° angle
- Base and end fittings are hot dip galvanized ductile iron

Current

Phase 1-Phase

Dimensions

Mounting Bolt Spacing	<ul style="list-style-type: none">• 6.00 in• 8.00 in
Radius - FWDE Wrap-Around	1.5
Distance From Pole	18 in
Diameter - Rod / Tube	1.5 in
Width	3 in
Weight	9 lb.
Height	12.75 in
Length	18 in
Dimensions	18 in x 3 in x 12.75 in

Force Related

Strength Rating - Minimum Ultimate, Vertical (V)	1200 lb.
Strength Rating - Minimum Ultimate, Longitudinal (L)	900 lb.
Strength Rating - Minimum Ultimate, Transverse (T)	10000 lb.

General

Description - End Fitting	Tear Drop
Material type	Standard
UPC	096359597261

Logistics

Standard Package	5
Pallet Quantity	80

Product Assets

- [Catalog \[English\]](#)
- [Catalog Page \[English\]](#)